

MU

MATERIA_SURFACE

GRES FINE PORCELLANATO
RETTIFICATO_NATURALE

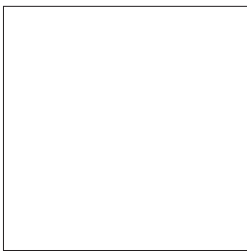
FINE PORCELAIN STONEWARE
RECTIFIED_NATURAL

80x80_40x80

32"x32" _16"x32"

LO STUDIO *Design*

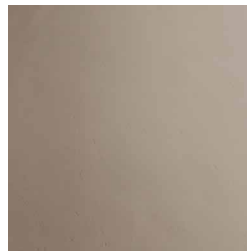
80x80 32"x32"



SQUARE
80x80 32"x32"



MU010
MU Light Square



MU020
MU Medium Square



MU040
MU Medium Warm Square



MU070
MU Dark Square

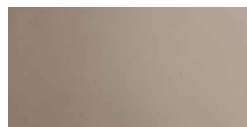
40x80 16"x32"



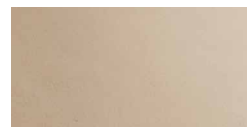
HALF
40x80 16"x32"



MU100
MU Light Half



MU200
MU Medium Half



MU400
MU Medium Warm Half



MU700
MU Dark Half

STUCCHI CONSIGLIATI / SUGGESTED GROUTS

BGT30 BRIXGROUT Dust

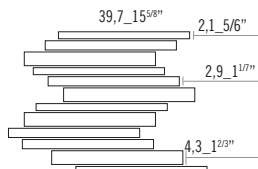
BGT40 BRIXGROUT Grey

BGT60 BRIXGROUT Mou

BGT80 BRIXGROUT Coffee

MOSAIC 39,7x40 15^{5/8}"x16"

BRIX *Design*



MOSAIC
39,7x40 15^{5/8}"x16"



MUM010
MU Light Mosaic



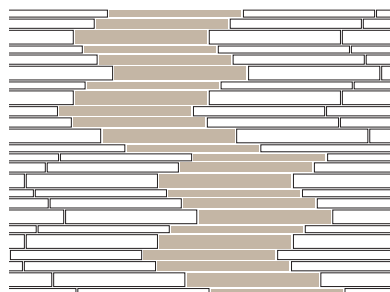
MUM020
MU Medium Mosaic



MUM040
MU Medium Warm Mosaic



MUM070
MU Dark Mosaic

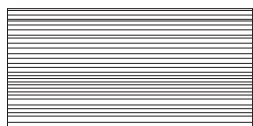


Si consiglia di posare i moduli in modo non allineato al fine di perdere totalmente la lettura del modulo stesso.

We recommend not aligning the sections when placing, so that it is impossible to see the point at which installation began.

HOME 40x80 16"x32"

L+R PALOMBA *Design*



HOME
40x80 16"x32"



MUH10
MU Light Home



MUH20
MU Medium Home



MUH40
MU Medium Warm Home



MUH70
MU Dark Home

Lo stucco deve entrare nelle fughe tra un modulo e l'altro e all'interno delle incisioni presenti in ogni singolo modulo. Si raccomanda fuga di 1 o 2 mm.

The grout fills both the joints between the tiles and the incisions that are in every single tile.
Tile spacing recommended 1 or 2 mm.

STUCCHI CONSIGLIATI / SUGGESTED GROUTS

BGT30 BRIXGROUT Dust

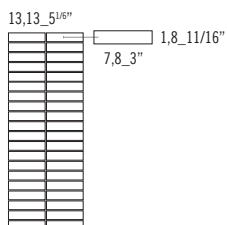
BGT40 BRIXGROUT Grey

BGT60 BRIXGROUT Mou

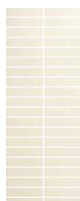
BGT80 BRIXGROUT Coffee

FRAME 15,8x39,8 6^{2/9}"x15^{2/3}"

BRIX *Design*



FRAME
15,8x39,8 6^{2/9}"x15^{2/3}"



MUF10
MU Light Frame



MUF20
MU Medium Frame



MUF40
MU Medium Warm Frame



MUF70
MU Dark Frame

BRIX *Design*

STUCCHI CONSIGLIATI / SUGGESTED GROUTS

BGT30 BRIXGROUT Dust

BGT40 BRIXGROUT Grey

BGT60 BRIXGROUT Mou

BGT80 BRIXGROUT Coffee

Materiale adatto per uso esterno, interno, saune e piscine.
Material suitable for outdoor and indoor use, saunas and swimming pool.

Si consiglia fuga di 2 mm.
Tile spacing recommended 2 mm.

CARATTERISTICHE TECNICHE TECH INFO



**GRES FINE PORCELLANATO
RETTIFICATO_NATURALE**
FINE PORCELAIN STONEWARE
RECTIFIED_NATURAL



SPESSORE
THICKNESS
10 mm_3/8"



ASSORBIMENTO DELL'ACQUA
WATER ABSORPTION
≤ 0,5% < 0,0%



DUREZZA (MOSH)
HARDNESS (MOSH)
≥ 6 6



RESISTENZA AL GELO
FROST RESISTANCE
Resiste / Resists



RESISTENZA ALL'ATTACCO CHIMICO
RESISTANCE TO ACIDS AND ALKALIS
Non attaccati / Unaffected



RESISTENZA ALLE MACCHIE
STAIN RESISTANCE
Pulito / Cleaned



COEFFICIENTE DI ATTRITO MEDIO
AVERAGE COEFFICIENT OF FRICTION
R9

■ valore standard / required standard

■ valore Brix / Brix value

CONSUMO DI STUCCO KG/MQ GROUT REQUIRED KG/ S²M

SQUARE
80x80 32"x32" 0,09 KG

HALF
40x80 16"x32" 0,11 KG

MOSAIC
39,7x40 15^{5/8}"x16" 1,84 KG

HOME
40x80 16"x32" 2,20 KG

FRAME
15,8x39,8 6^{2/8}"x15^{2/3}" 2,40 KG